

2/22 Eagleview Place

Price on Application



ABOUT THE PROPERTY

The Villa is located at the top of Smithfield's most prestigious sub-division, Canopy's Edge. Built by KBL Constructions, the villa features two separate living areas/kitchens and three bedrooms on each level which have the option to be individually accessed. This allows the villa to be suitable for an extended family or for an investment. The ground floor features a carport large enough for 4 vehicles as well as sufficient space for a swimming pool.

The first floor of the villa features a large patio/deck area which can be sectioned off to be accessed from each living area.

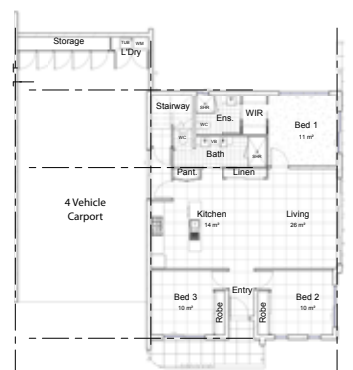


LAND: 1141m² VILLA: 401m²
(approximate)

UPPER LEVEL



GROUND FLOOR



PROPERTY FEATURES

2 Storey Villa - Rainforest Backyard

- Telecommunications - Underground Fibre Optic Cable Technology for high speed Internet, telephone and Free to Air TV. All major telecommunication providers are available.
- Outdoor & Rooftop Entertaining Area
- Fully Landscaped and space for a shed
- Plenty of room to park a large caravan or boat

Canopy's Edge, Sales and Information Centre, 2 Ashwood Circuit, Smithfield Qld 4878

(07) 4038 3888 (07) 4038 3777 www.canopsyedge.com.au sales@canopsyedge.com.au