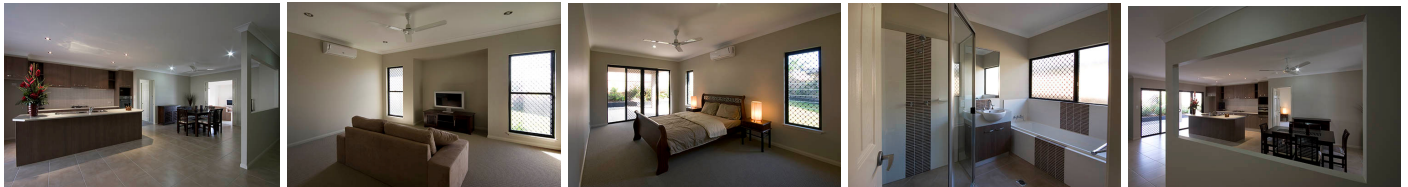
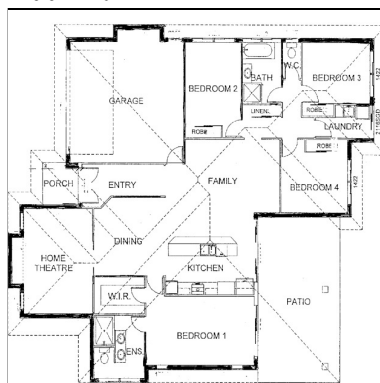


12 Bushlark Place Canopy's Edge, Smithfield Lot 33



- 4 Bedrooms with Ensuite & Main Bthrm
- Media/ Lounge Room
- Large Living Area
- DeLonghi Appliances - Gas Cooktop, dishwasher
- Modern Natural Interior Colour scheme
- Airconditioned throughout
- High Speed Broadband & Digital TV
- Entertainment/Intergraed Alfresco area
- Double Remote Garage & Storage space
- Large Fully Fenced & Landscaped Yard
- Security Monitored Estate

Floor Plan



Specifications

Internal	178.36 sqm
Outdoor Patio	32.76sqm
Garage	37.68 sqm

TOTAL HOUSE AREA 248.80 SQM
 Lot size 610sqm

\$569,000

At Canopy's Edge, you truly do have the best of both worlds

Sales Office and Display Village Open 7 days 10am – 5pm daily

Contact the Sales Office: **4038 3888** or Vicki: **0418 261 245** sales@canopysedge.com.au