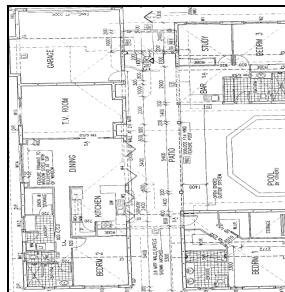


7 Bushlark Place Canopy's Edge, Smithfield Lot 28



- 4 Bedrooms (main sep) with 3 Bathrooms
- Media /Lounge Room
- Timber Bifold Windows/Doors
- Air conditioned throughout
- Solar Hot Water
- Gas Cooktop - GRANITE BENCHTOPS & SERVERY
- Sparkling Salt Water Pool
- Intergrated Outdoor Entertainment Area
- Built In Wet Bar
- Double Remote Garage with good storage
- Fibre Optic Connections for High Speed

Floor Plan



Specifications

Internal	186.77 sqm
Outdoor Patio	54.37 sqm
Garage	41.66 sqm
Entry	10.08 sq m
TOTAL HOUSE AREA	292.88 SQM
Lot size	613sqm

\$729,000

At Canopy's Edge, you truly do have the best of both worlds

Sales Office and Display Village Open 7 days 10am – 5pm daily

Contact the Sales Office: **4038 3888** or Vicki: **0418 261 245** sales@canopysedge.com.au